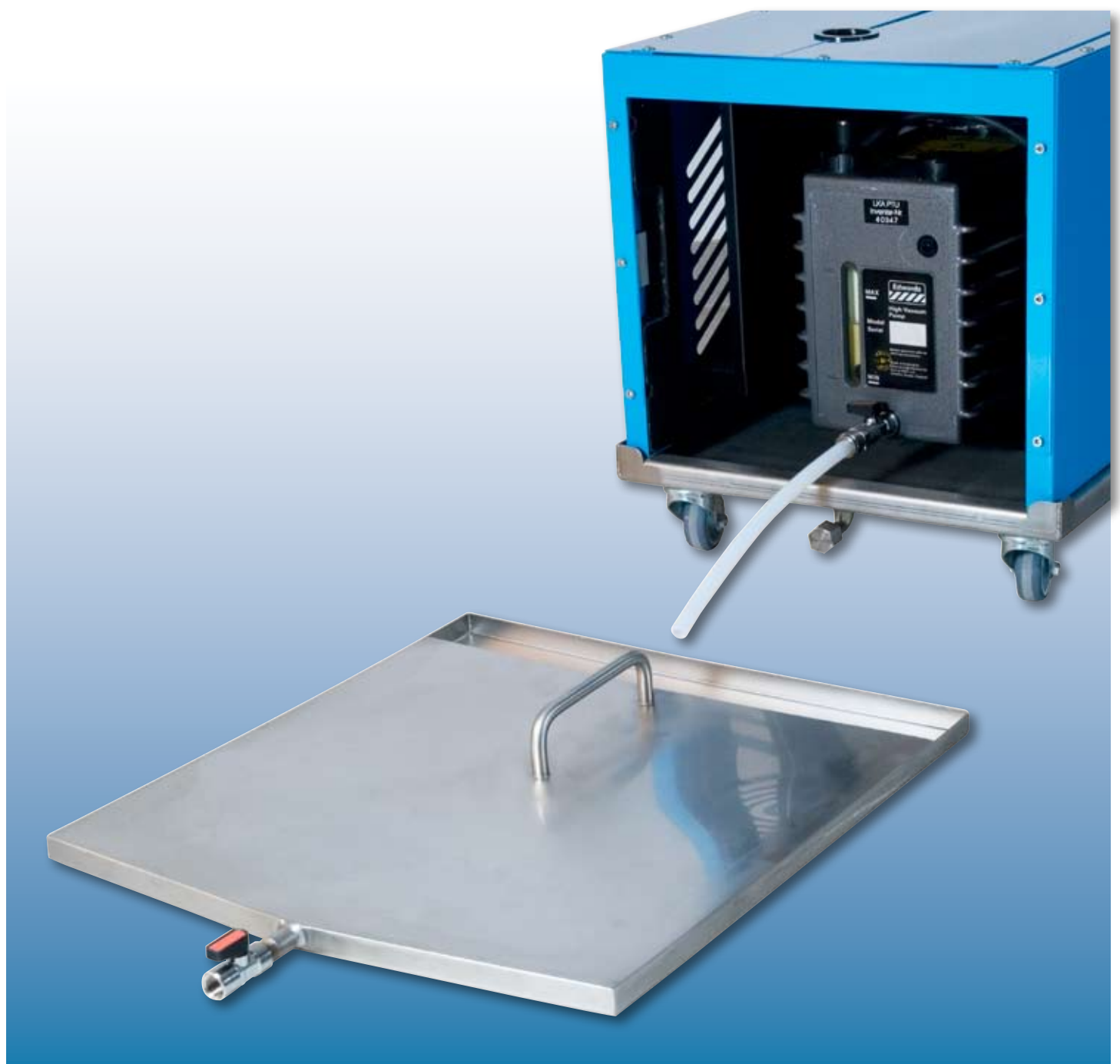


Sonation GmbH

for a silent lab.

Oil change kit January 2009



Sonation GmbH
Alte Schulstraße 39
88400 Biberach

Tel.: +49 (0) 7351 30038-39
Fax.: +49 (0) 7351 30038-41

www.sonation.com
mail@sonation.com

Quick installation guide



figure 1



figure 2



figure 3

Installation:

Remove the oil drain plug from your pump and install the valve assembly on your pump like shown in figure 1. Position the valve lever as shown (closed). Please wear laboratory gloves and make sure the black o-ring on the pump side is in place. There are pumps in the field with a different thread size, if so please call Sonation for an adapter. After installation let the pump run for a while and then check if everything is tight and there are no oil leaks.

The Valve lever points to the side when closed. This is the normal operating position.

Oil change:

To drain oil from the pump, push the white plastic hose into the quick connector like shown in figure 2. Place the oil drip sump under the hose and open the valve. Make sure the valve on the sump is closed during oil drain.

When you are done, close the valve assembly. Now you can remove the white hose from the valve assembly by pushing the ring on the quick connector and pulling the hose.